

# LED SCREEN

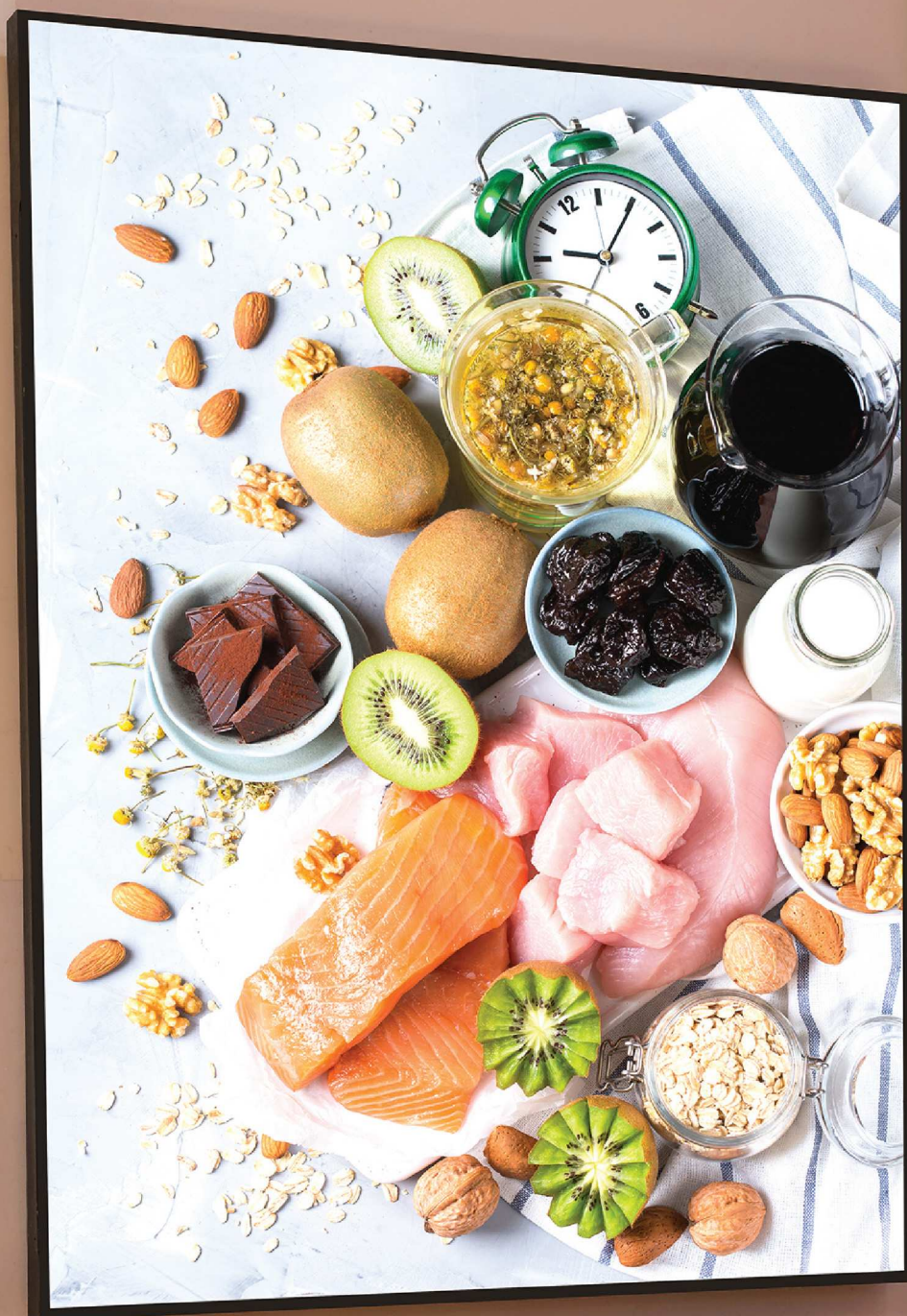
**Indoor** Series



*more than light*







**LED COB (XL Series)**  
Indoor LED Display

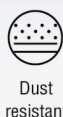


# LED Screen Indoor Series



## LED COB (XL Series)

Ultra-Clear, High-Value Micro LED Display  
XL1.5 / XL1.8



Dust resistant



Moisture resistant



Anti static electricity



Anti collision



Anti oxidation



Anti finger marks



### Stability & Reliability

- Flip-chip RGB technology, less pixel failure
- Energy consumption reduced by 40%
- Panel-type Encapsulating with six-star protection
- 1+1 redundant backup\*



### Micro LED Display

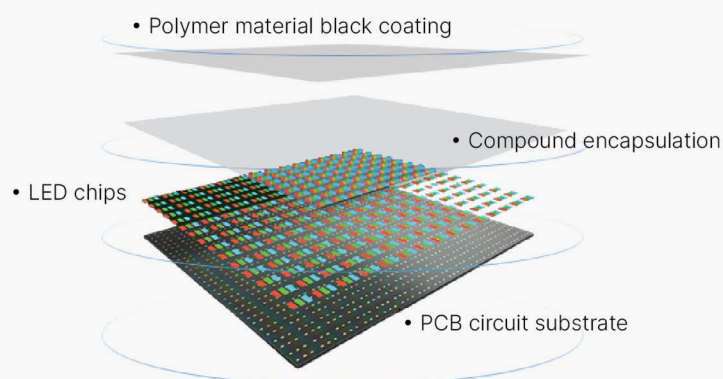
- Black as ink, smooth as a mirror
- Ultra-high contrast ratio 10000:1
- High refresh rate, high grayscale



### Multi-installation

- Wall mount installation, hanging installation, steel structure installation
- Standard bordering frame optional
- Small cabinet optional

## Flip Chip Technology



### • High Brightness

The light performance is not disrupted by shadows or other obstacles

### • High Contrast

No lead blocking and high proportion of black, bringing higher contrast

### • Enhanced Durability

The solder joints reduced by 53.8%, lowered the failure rate of led

### • Lower Power Consumption

Lower power consumption at the same brightness

↑ X4

Contrast boost

↑ X3

Surface stronger

↓ 50%

Lower failure rate

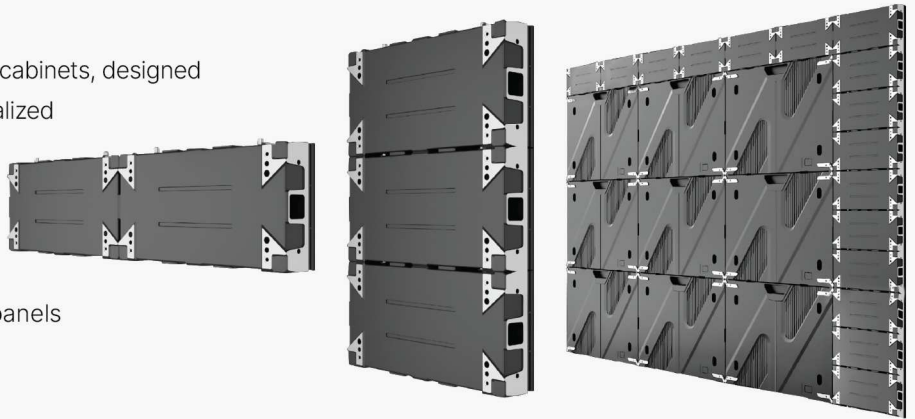
↓ 40%

More energy efficient

### **Variable Sizes, Infinite Splicing**

320\*160mm mini & 640\*480mm standard cabinets, designed in high-pressure resistant alloy, for personalized combination needs.

- Diversified splicing of small panels
- Splicing of standard panels and small panels



### **Standard Stacking Solution, Easy Installation**

Standard stacking solution with square steel structures, simplifying screen assembly for quick installation.

- Installation with steel structure



### **Wall-mounted Solution, Space-Saving**

Wall-mounted solution, maximizes space utilization, maintenance-free extra channels for efficient and ease installation.

- Wall mount
- Wall-mounted installation



### **Standard Hanging Solution, Safe and Reliable**

Standard hanging solution, flexible for various scenarios, widely meeting user demands with notable adaptability advantages.



- Recommended hanging LED display height: 6m or less, to ensure safety and visual effect
- 1x/2x hanging bars are available



## Full Front Maintenance, Convenient and Simple

Supports full front maintenance for modules, PSU, and receiver card, simple and easy to operate.

## Safe and Stable

Standard manufacturing process and a number of quality tests ensure safe operation of CPN series.

### • Reliable raw material

High quality LED lamp , power box and other accessories

### • Quality control throughout the whole manufacturing process

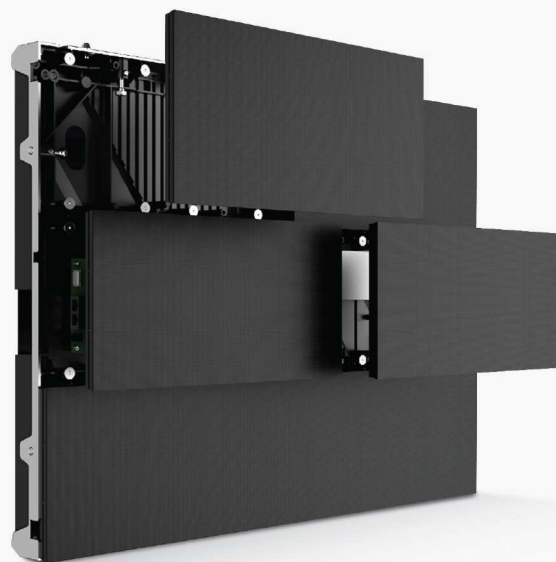
18 monitoring links  
29 operation processes  
33 recording links  
2285 inspections and tests

### • Long service life

Pursue precision and high quality Energy efficiency, long service life

### • Standard manufacturing process

Adhere to standard manufacturing process to ensure product quality



### • Certifications

China Compulsory Certification  
Energy Conservation Certification  
Pass performance/ blue light hazard/  
photobiology test, etc.

### • Save operating cost

Stable product quality  
Low operational risks  
Low operating and maintenance costs

## Specification

Parameters	ITEM	XL1.5	XL1.8
Physical Parameter	LED Type	Flip-Chip RGB	Flip-Chip RGB
	Pixel Pitch (mm)	1.53	1.86
	Panel Dimensions (WxH, mm)	640x480x60	640x480x60
	Panel Resolution	416x312	344x258
	Panel Weight (kg)	7.5	7.5
	Panel Material	Die Casting Aluminum	
	Module Size (WxH, mm)	320x160	
Optoelectronic Parameter	Brightness (nit)	600	
	Refresh Rate (Hz)	3840	
	Grayscale (bit)	15 (Internal Processing)	
	Contrast Ratio	10000:1	10000:1
	Viewing Angle (H/V, °)	160/160	160/160
	AC Operating Voltage (V)	100~240	
	Power Consumption (max./avg., W/m <sup>2</sup> )	290/97	310/104
Application Parameter	Storage Temperature ( °C)	-40~+60	
	Operating Temperature ( °C)	-10~+40	
	Storage Humidity (RH)	10%~85%	
	Operating Humidity (RH)	10%~80%	
	IP Rating	IP40/IP21	
	Certificate	CCC, CE, ETL, FCC, UKCA	

\* Power Consumption Tolerance: ±15%, According to the Actual Situation.



# Screenpad Series

## Indoor LED Display





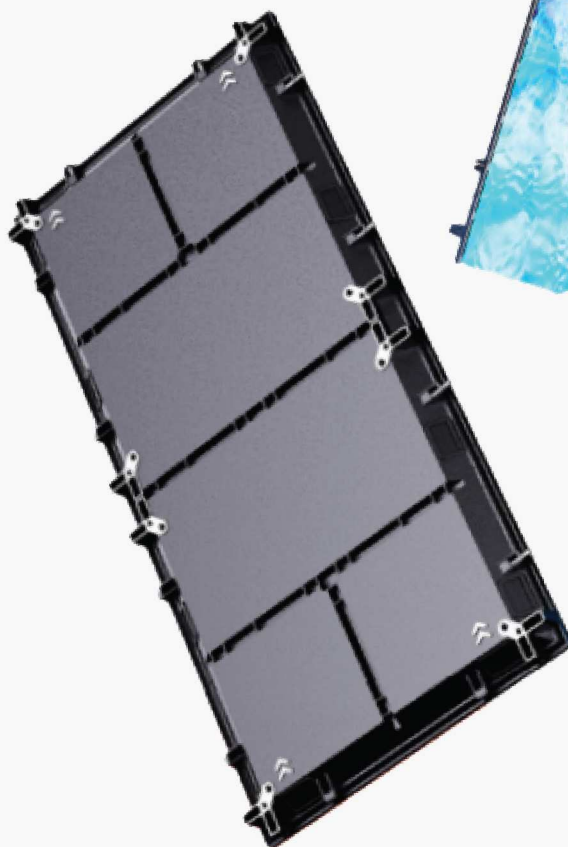
# LED Screen Indoor Series

## Screenpad Series

- **HANGING 13M HIGH**  
without additional bracket
- **The chassis has been tested to a 1300kg breaking point**

### Light and Thin

44mm	19kg
THICKNESS	PER M <sup>2</sup>





# LED Screen Indoor Series

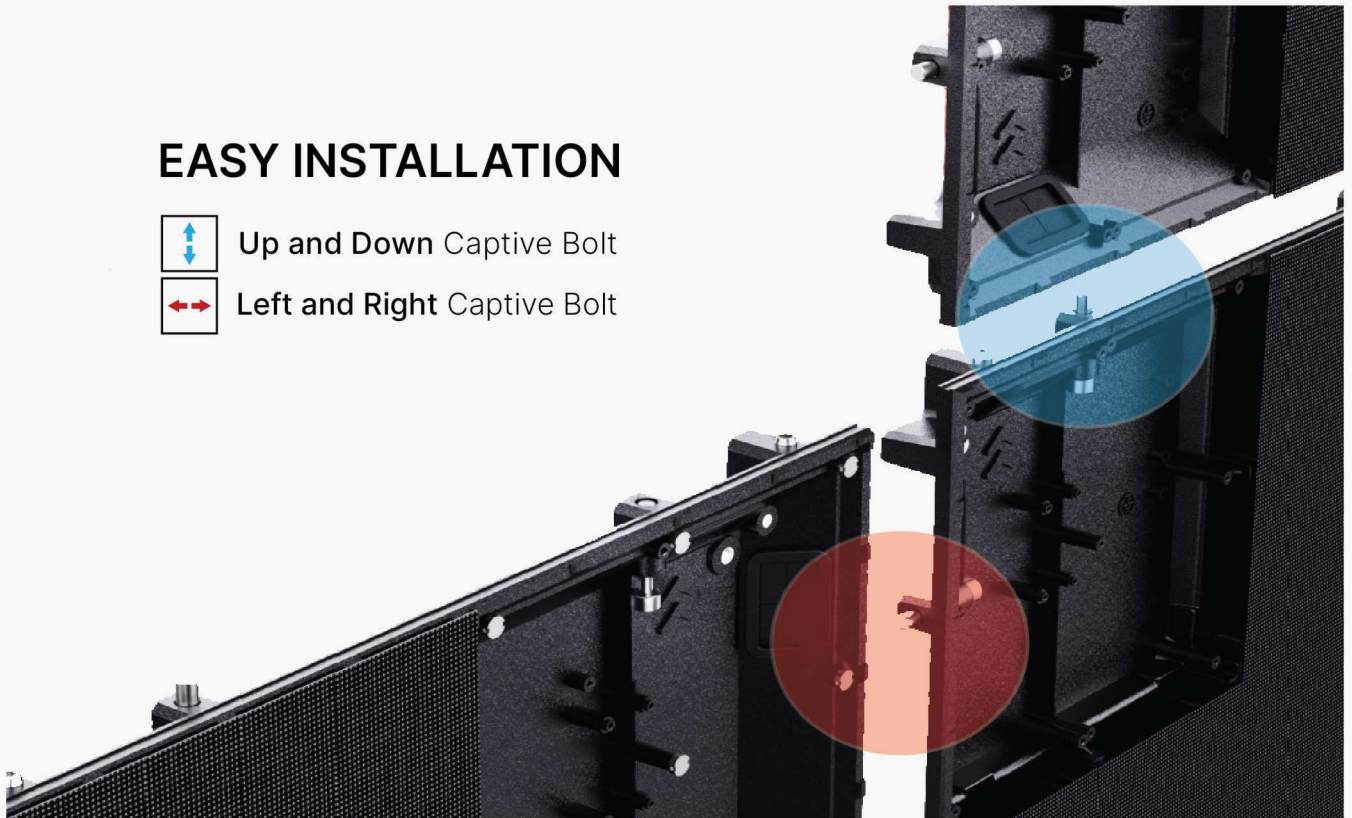
## EASY INSTALLATION



Up and Down Captive Bolt



Left and Right Captive Bolt



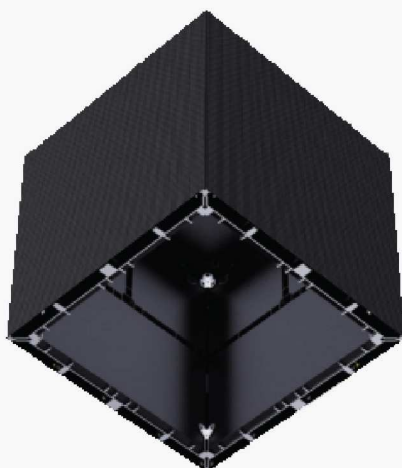
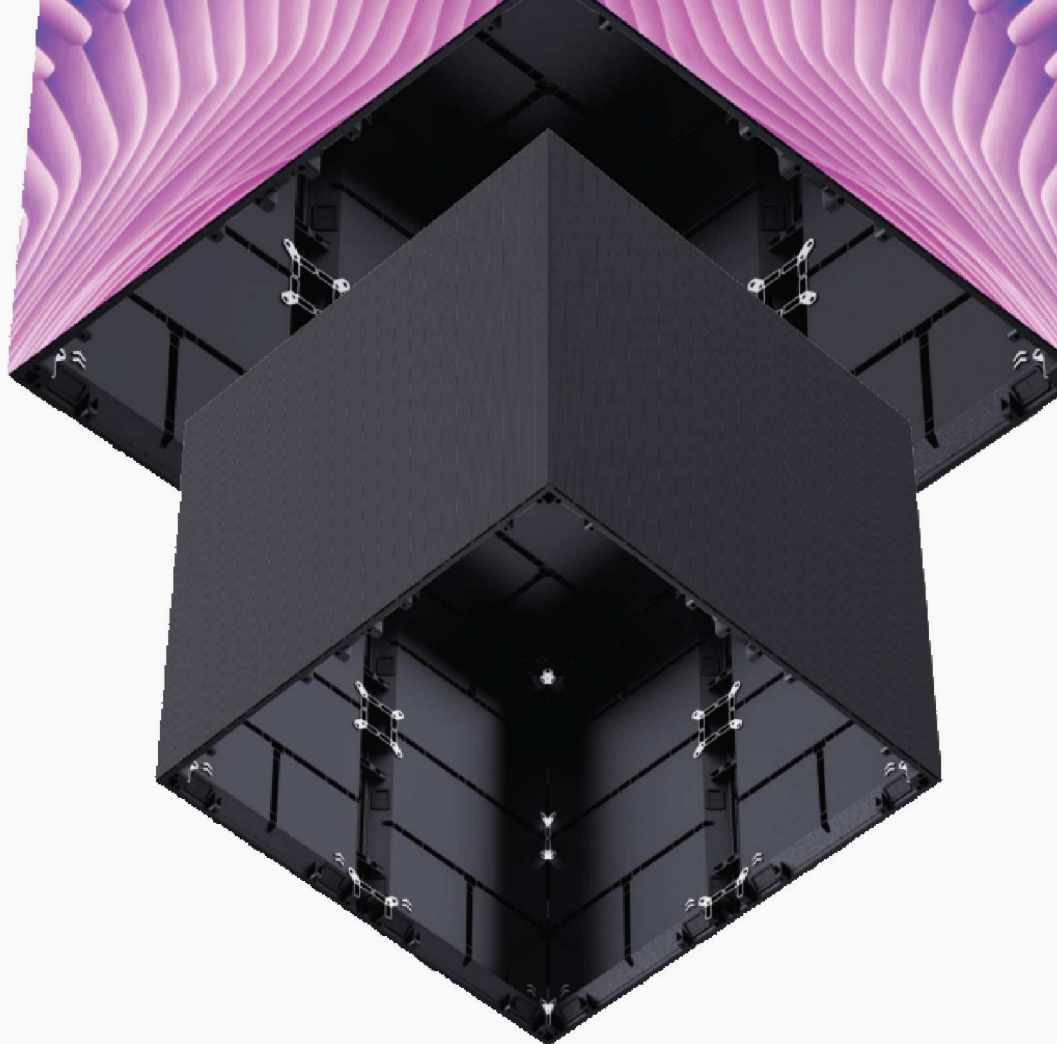
## POWERFUL COMPATIBILITY

One chassis with same internal composition for all available pitches. All parts including module, power-supply, receiving card, hub, cables etc. are interchangeable. Superhigh efficiency on stocking



# LED Screen Indoor Series

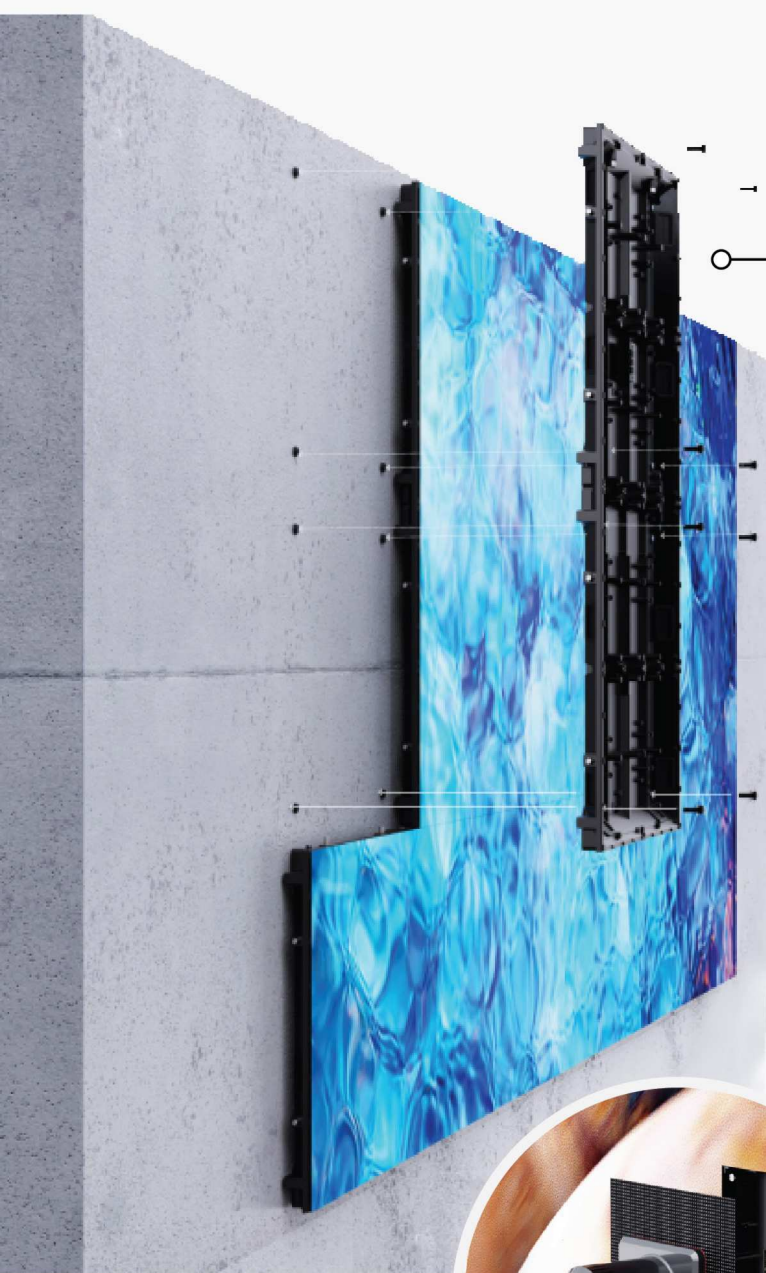
90° & Cubic Assembly  
Minimum Cubic Assembly is  
500\*500\*500mm



## CONCAVE & CONVEX

Panels are designed for concave and convex walls,  
to make a perfect joint between panels,  
edges of circuit board are 45° cut

# LED Screen Indoor Series



Bracket Free  
Direct Wallmount



Common Bracket  
Installation



## Easy Maintenance Front Service

Module and all parts are front accessible



# LED Screen Indoor Series

## SPECS CERTIFICATION

Model	Screenpad 1.5	Screenpad 1.8	Screenpad 2.5
Pixel Pitch(mm)	1.5625	1.8939	2.5
LED Configuration	SMD1212	SMD1515	SMD2020
Pixel Density(pixels/m <sup>2</sup> )	409,600	278,784	160,000
Brightness(cd/m <sup>2</sup> )	600~800	600~800	600~800
Module Size(W x H mm)	250×250	250×250	250×250
Module Resolution (dots)	160×160	132×132	100×100
Panel Size(W x H mm)	Standard: 500×1000×44, 500×250×44 Customized: 250×250, 250×750, 250×1000, 250×1250, 500×500×44, 500×750×44		
Panel Weight(Kg/m <sup>2</sup> )	Die-casting Aluminum 19.5Kg/m <sup>2</sup>		
Power Consumption (Max/Avg) W/m <sup>2</sup>	600/200	600/200	600/200
Refresh Rate	3840Hz	3840Hz	3840Hz
View angle(H./V.)	140° / 140°	140° / 140°	140° / 140°
Contrast	5000:1	5000:1	4000:1
Gray Scale	≤14 bits	≤14 bits	≤14 bits

Model	Screenpad 2.6	Screenpad 2.9	Screenpad 3.9
Pixel Pitch(mm)	2.604	2.97	3.91
LED Configuration	SMD1515	SMD2020	SMD2020
Pixel Density(pixels/m <sup>2</sup> )	147,456	112,896	65,536
Brightness(cd/m <sup>2</sup> )	600~800	600~800	800~1,000
Module Size(W x H mm)	250×250	250×250	250×250
Module Resolution (dots)	96×96	84×84	64×64
Panel Size(W x H mm)	Standard: 500×1000×44, 500×250×44 Customized: 250×250, 250×750, 250×1000, 250×1250, 500×500×44, 500×750×44		
Panel Weight(Kg/m <sup>2</sup> )	Die-casting Aluminum 19.5Kg/m <sup>2</sup>		
Power Consumption (Max/Avg) W/m <sup>2</sup>	600/200	600/200	600/200
Refresh Rate	3840Hz	3840Hz	3840Hz
View angle(H./V.)	140° / 140°	140° / 140°	140° / 140°
Contrast	4000:1	4000:1	4000:1
Gray Scale	≤14 bits	≤14 bits	≤14 bits

# Media Fix™ Series

## Indoor LED Display

Leading the LED screens  
integrated solutions provider





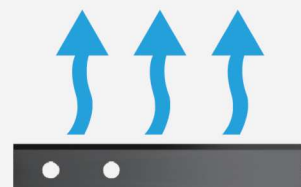
# LED Screen Indoor Series



## Media Fix™ Series Indoor LED Display

### Features

- Support seamless splicing 2K/4K pixel by pixel with better consistency.
- Support HDR features, constant high color temperature without color deviation to display real image quality.



- Adopt to high level LED lamp to realize high refresh rate and grey scale with better contrast ratio and vivid video displaying.

- Lower and uniform heating generation and fast dissipation with longer lifetime and stable running.



- Front / Rear maintenance optional applying to various situation, easy and fast installation

# LED Screen Indoor Series

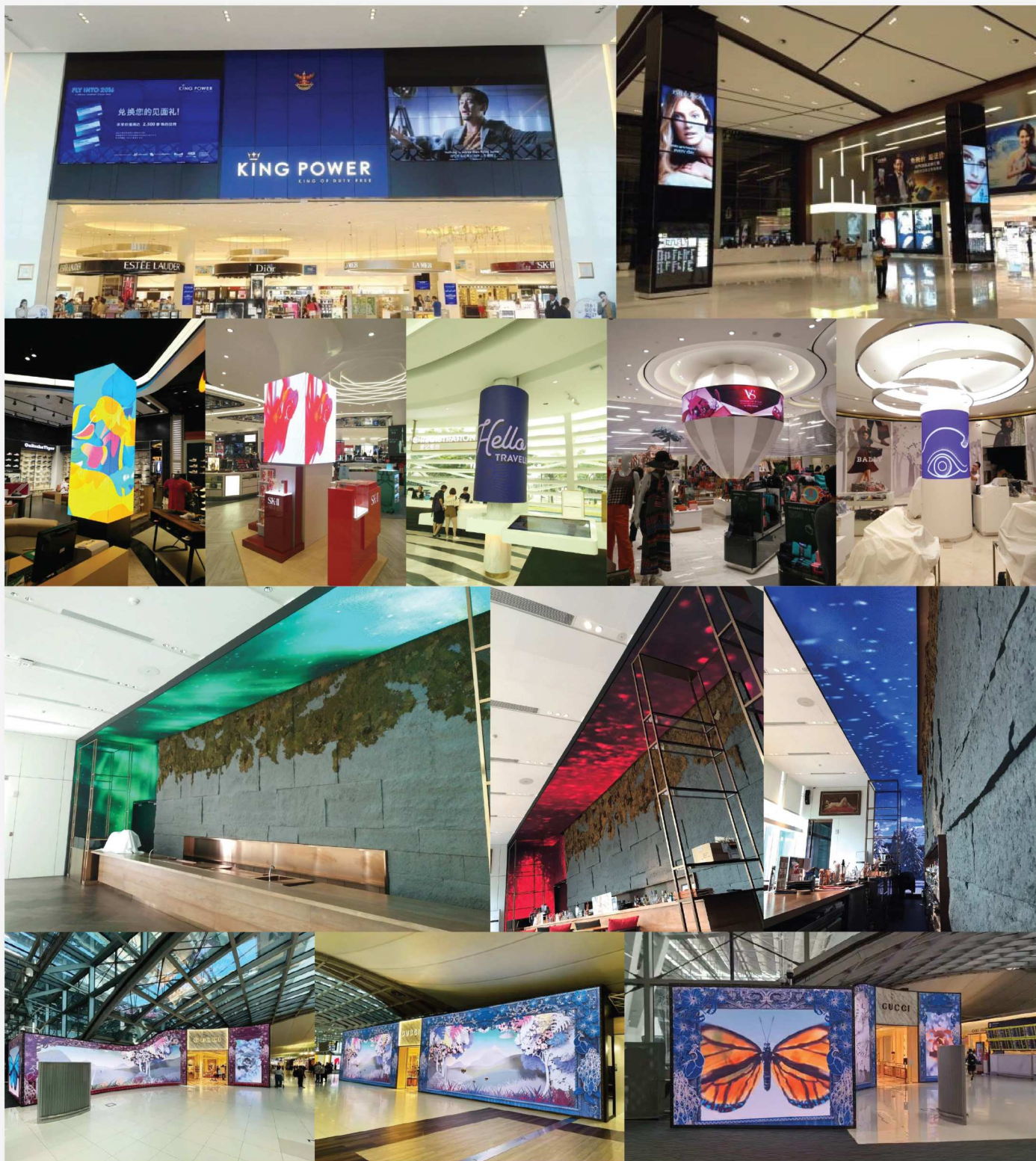
## SPECS CERTIFICATION

Parameters	ITEM	MFI-1.538D	MFI-1.86D	MFI-2.5D	MFI-3.076D
LED Module	Pixel Pitch (mm)	1.538mm	1.8939mm	2.5mm	2.976mm
	LED Lamp type	SMD1212	SMD1515	SMD2020	SMD2020
	Pixel Density (dots/m <sup>2</sup> )	422,500	288,906	160,000	105,625
	Module Resolution (WxH)	208 × 104 pixels	172 × 86 pixels	128 × 64 pixels	104 × 52 pixels
	Module Size (WxH)	320 × 160mm	320 × 160mm	320 × 160mm	320 × 160mm
LED Cabinet	Cabinet Size (WxH)	Standard : W.640 x H.480, W.640 × 640mm Custmoized : W.320 x H.160mm, W.320 x H.480mm, W320 × 640mm, W.960 × 480mm			
	Cabinet Weight (kg/sqm)	19	19	19	19
	Cabinet Material	Die-casting Aluminum	Die-casting Aluminum	Die-casting Aluminum	Die-casting Aluminum
	Maintenance	Front only	Front only	Front only	Front only
Electrical Parameter	Color Temperature (K)	6500-9000K	6500-9000K	6500-9000K	6500-9000K
	View Angle (H./V.)	140° / 140°	140° / 140°	160° / 160°	160° / 160°
	Full Color	281 trillion	281 trillion	281 trillion	281 trillion
	Refresh Rate (Hz)	≥3,840Hz	≥3,840Hz	≥3,840Hz	≥3,840Hz
	Scan mode	1/52	1/43	1/32	1/32
	Max. Brightness (nits)	600	600	600-800	600-800
	Max. Power Consumption	500W/m <sup>2</sup>	500W/m <sup>2</sup>	500W/m <sup>2</sup>	500W/m <sup>2</sup>
	Avg. Power Consumption	167W/m <sup>2</sup>	167W/m <sup>2</sup>	167W/m <sup>2</sup>	167W/m <sup>2</sup>



# LED Screen Indoor Series

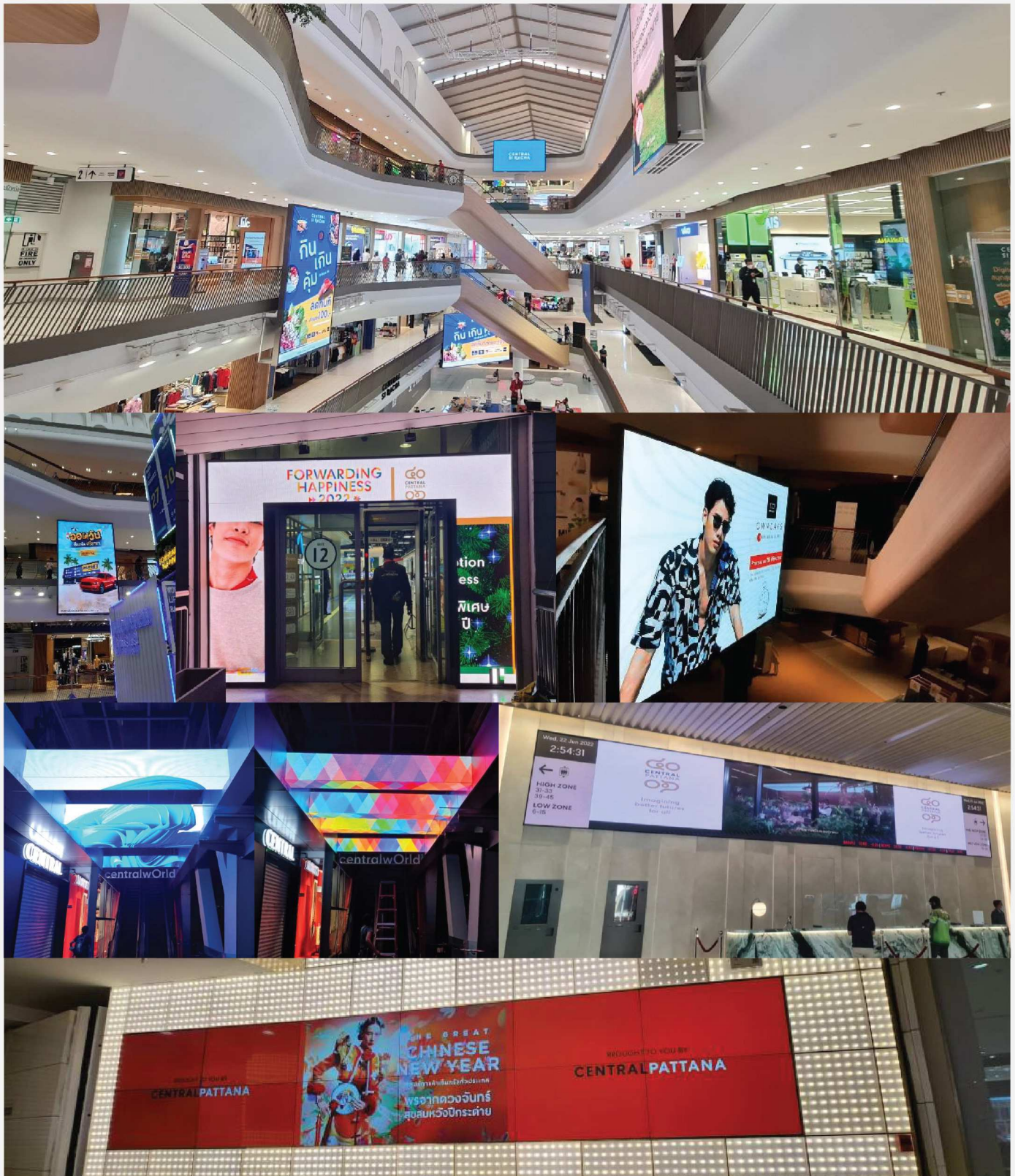
## PROJECT REFERENCE KING POWER





# LED Screen Indoor Series

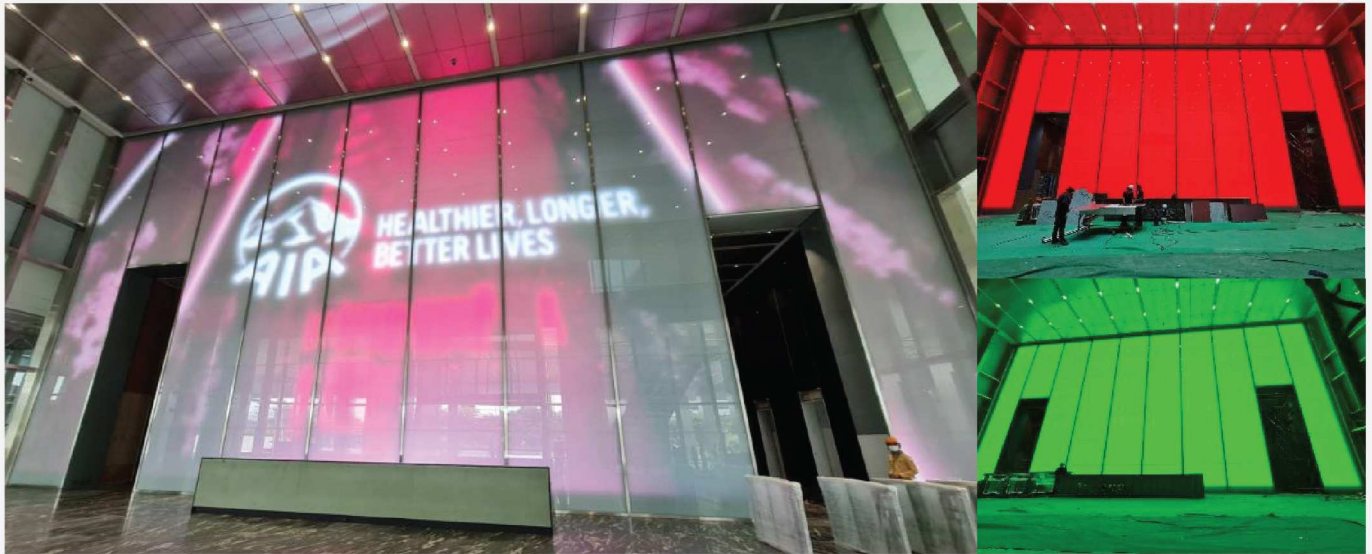
## PROJECT REFERENCE CENTRAL PATTANA



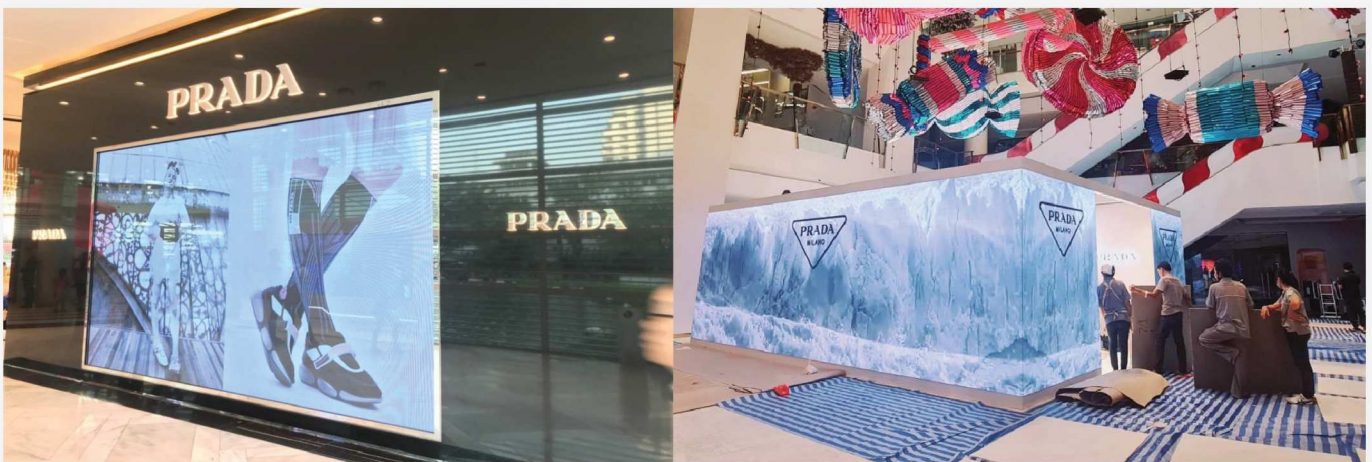


# LED Screen Indoor Series

## PROJECT REFERENCE AIA



## PRADA



## EMPORIO ARMANI



## GUCCI





## Thailand offices

### Lighting and Equipment Public Company Limited

#### Head Office

539/2, 16-17 Floor, Gypsum Metropolitan Tower.  
Sri-Ayudhya Rd., Rajthevee, Bangkok 10400, Thailand.  
Tel : (66) 0-2248-8133, (66) 0-2642-5092  
Fax : (66) 0-2248-8144, (66) 0-2642-5091  
E-mail to corporate communication : cco01@lighting.co.th  
E-mail to oversea business: eklukb@lighting.co.th



L&E Head Office

#### Showroom

L&E : Lighting Solution Center  
9, Pakin Building Ratchadapisek Road Dindaeng,  
Bangkok, 10400  
Tel : 662-246-1164-66, Fax : 662-246-1161  
E-mail : rd@lighting.co.th  
Rachapruek Branch 3rd Floor The Crystal SB Rachapruek  
Tel : 02-118-7501  
E-mail : rd@lighting.co.th



Lighting Solution Center  
Rachapruek



Lighting Solution Center  
Ratchadapisek

## Oversea Offices and Contact



L&E Myanmar Co., Ltd.  
No. 19-L Myint Zu 2 Street, Yankin  
Township Between Kabaraye Pagoda Road  
and Wayzayantar Road, Yangon, Myanmar.  
E-mail : le\_myanmar@lighting.co.th

Tel: +95 94 5001 0468



Lighting & Equipment (Vietnam) Co., Ltd.  
Lot 101/3 Road No.1 Long Binh (AMATA)  
Industrial Park, Long Binh Ward,  
Bien Hoa City, Dong Nai Province, Vietnam  
E-mail : eklukb@lighting.co.th

Tel: +84 251 368 5688



Lighting & Equipment (Representative Office) Indonesia.  
The Vida Building 7th Floor,  
Jl. Raya Perjuangan No.8  
Kebon Jeruk-Jakarta Barat, Jakarta 11530  
Indonesia  
E-mail : jemmy@lighting.co.th

Tel: +62 212 977 8000  
M: +62 818 08 2000 18  
+62 818 08 3332 47



Representative of Lighting & Equipment Malaysia.  
Contact point : Mr. Alex Goh  
E-mail : alex.goh@lighting.co.th

M: +60 1 2286 1288



Lighting & Equipment Corporate showroom Cambodia  
Home Access Co., Ltd.  
THAN'S Building No.46  
Mao Tse Toung Blvd (245) Corner 95 road,  
Phnom Penh 120111, Cambodia  
E-mail : sale@myhomeaccess.com

Tel: +855 23 216 195



www.lighting.co.th